

# Remote Management

## GRUNDFOS GRM

Grundfos Remote Management (GRM) is an internet based remote monitoring, management and reporting system for pump installations in water infrastructure and commercial applications, allowing a user full control of their system from a PC or smart phone. GRM provides remote access and control to data and alarms from pumps, pump controllers, and auxiliary equipment such as sensors and meters. Data from pump installations is transferred to a central database and published to subscribers on a secure web server. Users have access to data from pump installations that are registered to their own account, allowing complete insight to their wastewater network.

### Key Features and Benefits

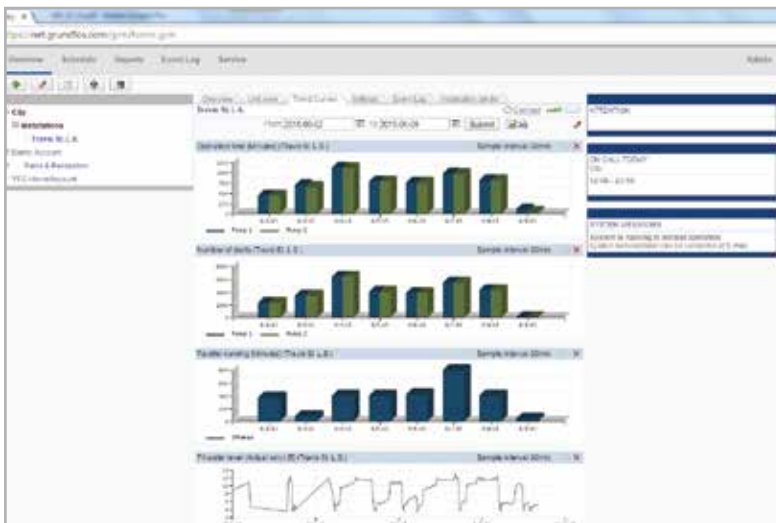
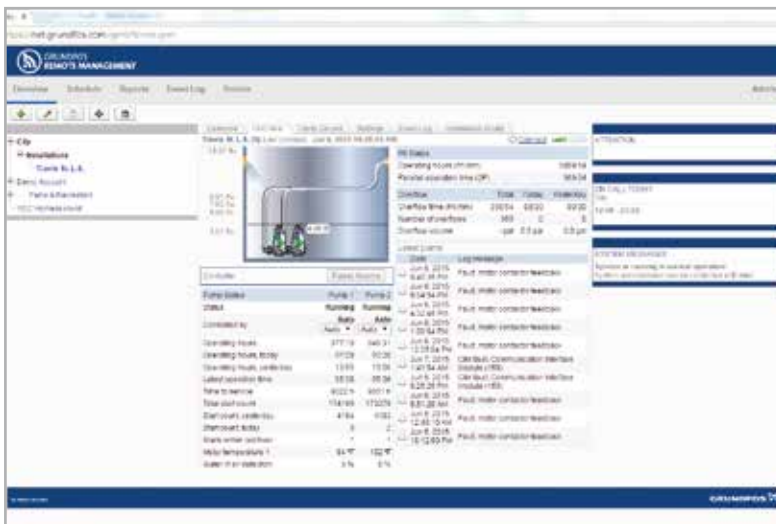
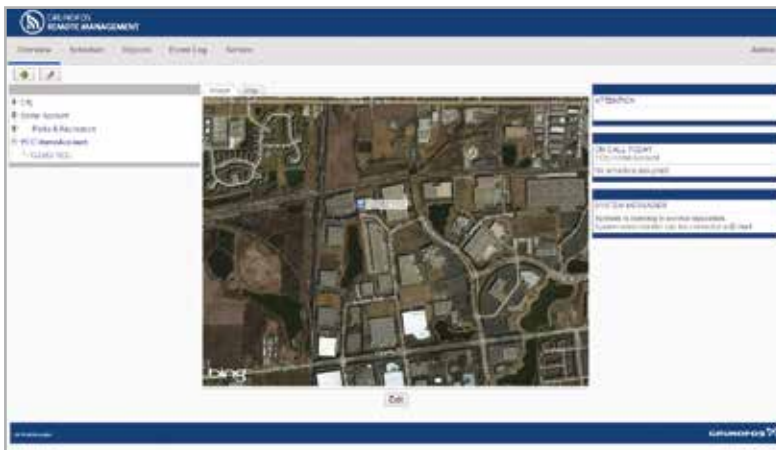
- A complete overview of the operation, performance and trends and see the status of your entire system on your own map or aerial photo
- User friendly interface allows live monitoring, analysis and adjustments, monitoring of energy consumption, and optimization of system performance, all from the comfort of your office
- Cost effective solution saves time and cost with reduced need for onsite inspection
- Flexible on-call scheduling feature allows simple planning of who responds to alarms, and in the event of an alarm or warning, the relevant people are notified directly via text message and/or email
- Service and maintenance work is simplified when planned on the basis of actual operating data, and notifications are sent when service is due
- Easily plan and prioritize maintenance and new projects to meet the changing demands for your wastewater network
- System documentation is easily shared online with relevant personnel
- Secure and reliable, a fixed low fee covers data traffic, hosting costs and system support, including back-up of all data
- The CIU501 communication interface enables data transmission via a 3G/4G smart phone or internet connection from your Grundfos pumps and controls
- Utilizing discrete/analog inputs and relay outputs, the CIU501 allows the user to monitor and control virtually anything in their system



#### APPLICATIONS

- Wastewater lift stations, including Dedicated Controls
- Booster stations, including BoosterpaQ systems
- Water supply networks
- Wastewater plants
- Agricultural irrigation systems
- Commercial buildings
- Mines and construction sites
- Any application where user wants to monitor and control their system remotely

# GRM Technical Data



ALARMS AND WARNINGS	
Overflow	Motor temperature
High level	Overtoltage
Alarm level	Undervoltage
Dry running	Overload
Bearing temp. high	Underload
.... and many more	

OPERATIONAL DATA	
Pumped volume	Operation time
Energy consumption	Number of starts
Specific Energy	Parallel running time
.... and more	

REMOTE CONTROL	
Manual operation (forced start)	
Alarm reset	
Adjust start, stop and alarm levels	

The name Grundfos, the Grundfos logo, and be think innovate are registered trademarks owned by Grundfos Holding A/S or Grundfos A/S, Denmark. All rights reserved worldwide. L-GRM-SL-01 10-16